

LIFTING & HOISTING



ROUNDSLINGS
LOADSET CHAIN HOISTS
HAND CHAIN HOIST
'S' SERIES CHAIN HOISTS
HAND CHAIN HOISTS
LOADSET MINI HOIST
LOADSET LEVER HOISTS
LEVER HOISTS
LEVER HOISTS
M3 CHAIN HOISTS
L5 LEVER HOISTS
LOADSAFE CHAIN HOISTS
VITAL CHAIN HOISTS
VITAL LEVER HOISTS
OZ LOADSAFE LEVER HOISTS
LOADSET GIRDER CLAMPS
LOADSET GIRDER TROLLEYS
GIRDER TROLLEY WITH CLAMP
GIRDER CLAMPS

5 GRDER TROLLEYS
6 7 GIRDER TROLLEY WHEELS
8 GEARED GIRDER TROLLEYS
9 COMBINED HOISTING ASSEMBLY
10 SUPERCLAMP GIRDER CLAMPS
11 SUPERCLAMP GIRDERDOGS
11 UNIVERSAL SUPERCLAMP
12 UNIVERSAL PLATE CLAMPS
13 HORIZONTAL PLATE CLAMPS
14 RENFROE CLAMPS
14 HEAVY DUTY SNATCH BLOCKS
15 MANUAL SHEAVES/SHEAVES BLOCKS
16 KITO ELECTRIC CHAIN HOIST
16 HITACHI ELECTRIC CHAIN HOISTS
17 GIS-OH ELECTRICCHAIN HOISTS
18
18
19

20 GIS LIFT CHAMP ELECTRIC CHAIN HOIST 32
20 ELECTRIC CHAIN HOIST 33
21 8 WAY MOTOR CONTROLLER 33
22 TITAN ELECTRIC BUILDERS HOIST 34
23 MOUNTING BAR TITAN ELECTRIC BUILDERS
24 HOIST 34
25 JDN AIR HOISTS 35
26 JDN AIR WINCHES 35
26 NGK WIRE GRIPS 36-37
27 NGK TENSION METERS 36
28 NGK RATCHET PULLERS 37
28 NGK RATCHET WRENCH 37
29 TITAN PIPE TROLLEY 38
30 PERMANENT MAGNETIC LIFTER 38
31 PORTABLE ALLUMINIUM GANTRY CRANES 39

LIFTING & HOISTING



Manufactured Lifting Equipment

**IF YOU CAN'T FIND WHAT YOU'RE LOOKING
FOR, CALL OUR SALES TEAM & IF WE
DON'T HAVE IT, WE'LL GET IT FOR YOU!**

FLAT WEBBING & POLYESTER ROUNDSLINGS



COLOUR CODE	VERTICAL WLL kg	CHOKE WLL kg	BASKET 3 WLL kg	30° WLL kg	60° WLL kg	90° WLL kg	120° WLL kg	60° WLL kg	60° CHOKE WLL kg
VIOLET	1000	800	2000	1900	1700	1400	1000	1700	1400
GREEN	2000	1600	4000	3800	3400	2800	2000	3400	2800
YELLOW	3000	2400	6000	5700	5100	4200	3000	5100	4200
GREY	4000	3200	8000	7600	6800	5600	4000	6800	5600
RED	5000	4000	10000	9500	8500	7000	5000	8500	7000
BROWN	6000	4800	12000	11400	10200	8400	6000	10200	8400
BLUE	8000	6400	16000	15200	13600	11200	8000	13600	11072
ORANGE	10000	8000	20000	19000	17000	14000	10000	17000	14000
ORANGE	12000	9600	24000	22800	20400	16800	12000	20400	16800
ORANGE	15000	12000	30000	29500	25500	21000	15000	25500	21000
ORANGE	20000	16000	40000	38000	34000	28000	20000	34000	28000
ORANGE	30000	24000	60000	57000	51000	52000	30000	51000	52000
ORANGE	50000	40000	100000	95000	85000	70000	50000	85000	70000

Note ~ The maximum WLL is determined by the sling angle.



- Polyester web slings manufactured to AS1353.1
- Polyester web slings manufactured to AS4497
- Manufactured in various lengths and made to order
- Large stock of heavy lift polyester slings
- Extra durable WLL tag with clear protective sleeve fitted

OVERLOAD PROTECTION CHAIN HOIST

Capacities from 0.5 up to 20 tonnes

Improved hook tips
with cast self-locking
latches.



Integrated safety
Overload Clutch.



Extra Thickness
Ratchet Gear match
Double Pawls.



Chrome plated finish
on side plate, golden
zinc plated on inner
parts.



Innovative bottom
hook with caged
roller bearings.



Powder Coated
paint finish

Aluminum
name plate

All steel
construction

High strength
plated alloy
load chain

Camber design
without any
tuber for free
lift.

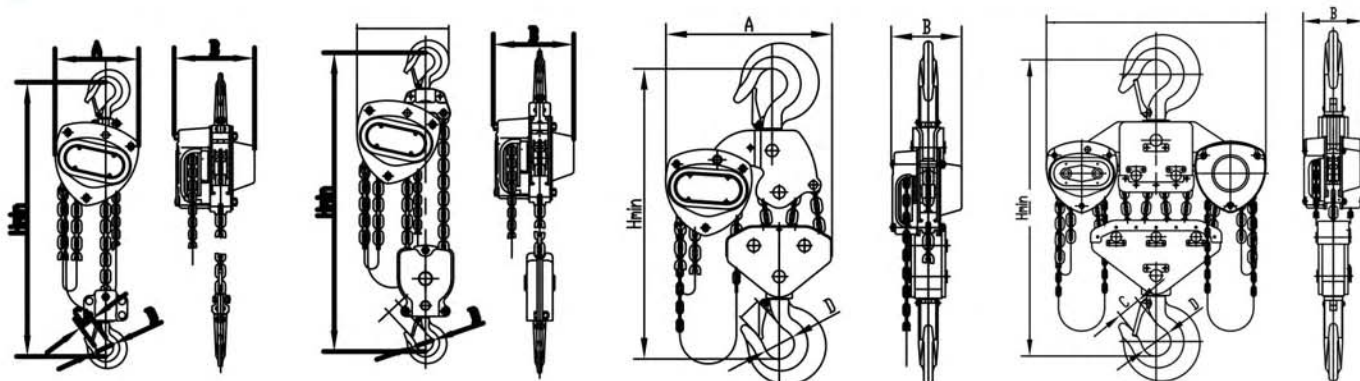


Complies to AS1418.2

LOADSET
SAFE LIFTING - SECURE LASHING



Model Code		MCB005	MCB01	MCB02	MCB03	MCB05	MCB10	MCB20
Capacity	T	0.5	1	2	3	5	10	20
Standard Lift	m	3/6	3	3	3	3	3	6
Running Test Load	T	0.75	1.5	3	4.5	7.5	15	30
Effort Required To Lift Rated Load	N	255	260	300	335	360	392	392x2
Falls of Load Chain		1	1	1	2	2	4	8
Load Chain Diameter	mm	Φ5x15	Φ6x18	Φ8x24	Φ7x21	Φ10x30	Φ10x30	Φ10x30
Dimensions	A	153	177	217	205	240	395	837
	B	150	176	212	198	238	200	189
	C	139	150	180	177	192	192	81.4
	D	27	30	40	43	50	57	109
	Hmin	320	360	430	600	684	850	970
Net Weight	Kg	9.5/14.2	12.5	21	25	41	82	244
Extra Weight Per Meter of Extra Lift	Kg	1.58	1.82	2.44	3.32	4.64	8.26	16.52



LOADSET
SAFE LIFTING - SECURE LASHING

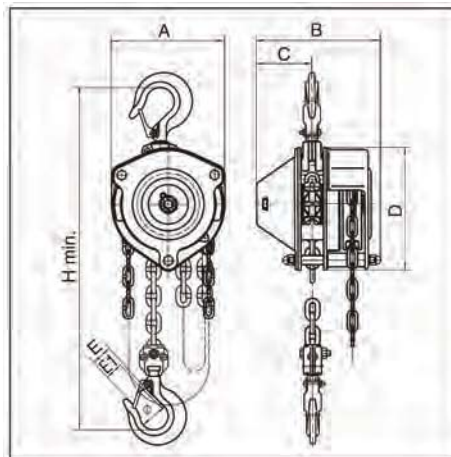
Specifications and dimensions are subject to change without notice



HAND CHAIN HOIST

Capacity: 250kg

- Lightweight robust construction
- Chrome plated covers
- Super strength alloy loadchain
- Minimum headroom
- Thrust race in lower hook
- Fully enclosed gear train
- Galvanised hand and loadchain
- Minimum effort to lift WLL
- Spare parts always available



Model		OMCB025
W.L.L.	tonnes	0.25
Lift	m	2
Test load	t	0.375
Headroom (hook to hook)	H min. mm	230
Effort to lift full load	N kg	12
No. of load chain fall lines		1
Load chain (dia. x pitch)	mm	ø4 x 12
Dimensions mm	A	100
	B	110
	C	48.5
	D	109
	E	18
	E1	15.5
	ø	25
Net weight	kg	3.5
Extra weight per metre of extra lift	kg	0.54

COMPLIES WITH AS/NZS1418.2

Meets or exceeds all relevant world standards



Manufactured Lifting Equipment

**IF YOU CAN'T FIND WHAT YOU'RE LOOKING
FOR, CALL OUR SALES TEAM & IF WE
DON'T HAVE IT, WE'LL GET IT FOR YOU!**

FLAT WEBBING & POLYESTER ROUNDSLINGS



COLOUR CODE	VERTICAL WLL kg	CHOKE WLL kg	BASKET 3 WLL kg	30° WLL kg	60° WLL kg	90° WLL kg	120° WLL kg	60° WLL kg	60° CHOKE WLL kg
VIOLET	1000	800	2000	1900	1700	1400	1000	1700	1400
GREEN	2000	1600	4000	3800	3400	2800	2000	3400	2800
YELLOW	3000	2400	6000	5700	5100	4200	3000	5100	4200
GREY	4000	3200	8000	7600	6800	5600	4000	6800	5600
RED	5000	4000	10000	9500	8500	7000	5000	8500	7000
BROWN	6000	4800	12000	11400	10200	8400	6000	10200	8400
BLUE	8000	6400	16000	15200	13600	11200	8000	13600	11072
ORANGE	10000	8000	20000	19000	17000	14000	10000	17000	14000
ORANGE	12000	9600	24000	22800	20400	16800	12000	20400	16800
ORANGE	15000	12000	30000	29500	25500	21000	15000	25500	21000
ORANGE	20000	16000	40000	38000	34000	28000	20000	34000	28000
ORANGE	30000	24000	60000	57000	51000	52000	30000	51000	52000
ORANGE	50000	40000	100000	95000	85000	70000	50000	85000	70000

Note ~ The maximum WLL is determined by the sling angle.



- Polyester web slings manufactured to AS1353.1
- Polyester web slings manufactured to AS4497
- Manufactured in various lengths and made to order
- Largest stockist in Australia of heavy lift polyester slings
- Extra durable WLL tag with clear protective sleeve fitted

LOADSET MINI LEVER HOIST

Capacity: 250kg

Strong and powerful yet compact and lightweight lever hoist capable of lifting, pulling or lowering up to 250kg. Small enough to fit in your toolbox.

Special features:

- Loadset brand quality
- Compact light weight design
- Chrome plated covers
- Galvanised load chain
- Easy to use free wheeling capabilities
- Tested to the requirements of AS1418.2



CAPACITY tonnes	HEADROOM mm	LEVEL LENGTH mm	CHAIN DIA. mm	CHAIN FALLS No.	NET WEIGHT kg
0.25	235	175	4	1	2



LOADSET LEVER HOIST

Capacities: 500kg to 9 tonnes

Robust all steel lever hoist suitable for all industrial applications.

Special features:

- Loadset brand quality
- Lightweight robust construction
- Easy to use free wheeling capabilities
- Cast steel safety latches
- Galvanised load chain
- Durable painted finish
- Automatic Weston brake with twin pawls
- Bottom hook fitted with bearing
- Longer load chain lengths available on request
- Tested to the requirements of AS1418.2
- 800kg to 6300kg with Overload protection



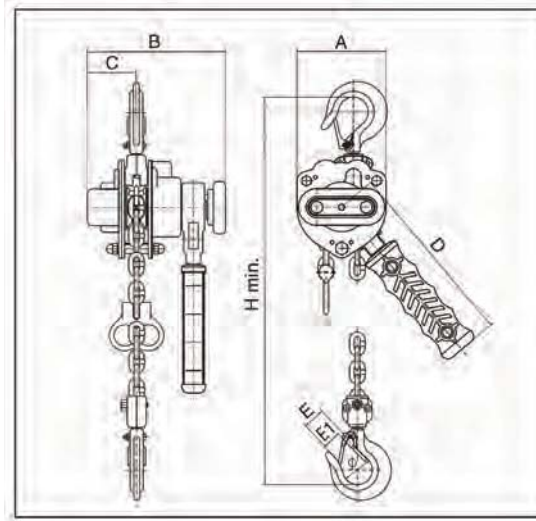
CAPACITY kg	HEADROOM mm	LEVEL LENGTH mm	CHAIN DIA. mm	CHAIN FALLS No.	NET WEIGHT kg
500	280	330	5	1	4.3
750	350	300	6	1	7.5
1500	470	390	8	1	12
3000	520	430	10	1	20
6000	640	430	10	2	26
9000	820	430	10	3	30



LEVER HOISTS

Capacities: 250kg and 500kg

- Lightweight robust construction
- Chrome plated covers
- Super strength alloy loadchain
- Minimum headroom
- Fully enclosed gear train
- Galvanised load chain
- Minimum effort to lift WLL
- Spare part always available



Model		OMLB025	OMLB05
W.L.L.	tonnes	0.25	0.5
Lift	m	1	1.5
Test load	t	0.375	0.75
Headroom (hook to hook)	H min. mm	215	255
Effort to lift full load	kg	13	18.5
No. of load chain fall lines		1	1
Load chain (dia. x pitch)	mm	ø4 x 12	ø5 x 15
Dimensions mm	A	75	90
	B	116	135
	C	41	51.5
	D	157	180
	E	18	24
	E1	15.5	21
	ø	25	32
Net weight	kg	2	3.5
Extra weight per metre of extra lift	kg	0.35	0.55

COMPLIES WITH AS/NZS1418.2

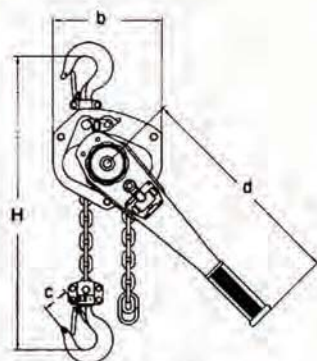
Meets or exceeds all relevant world standards

LEVER HOISTS

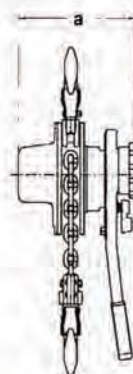
Capacity: 750kg to 6 tonnes

- Robust all steel construction
 - Simple Free-wheel operation
 - Super strength alloy loadchain
 - 1.5t, 3t and 6t models fitted with Grade chain
 - Powder coated paint finish
 - Stainless steel name plates
 - Cast steel safety latches
 - Four pocket liftwheel
- Four pocket liftwheel

- Forged malleable hooks with wide throat opening and deformation indicators
 - Test certificated and instruction manual supplied with every hoist
 - Spare parts always available
- IMPORTANT FEATURE**
- Minimal pre-load required to activate brake

0.75, 1, 1.5 & 3 tonne



6 tonne

Capacity (tonnes)	Model No.	No. of Falls	Chain dia. (mm)	Load Chain Grade	Effort to Lift Rated Load (kg)	Net Wt. with 1.5m Lift (kg)	Extra Wt. per m (kg)	Dimensions (mm)				
								a	b	c	d	H
0.75	OMLB075	1	6.3	80	15	6.9	0.85	148	128	37	256	295
1.5	OMLB150	1	7.1	100	18	9.7	1.11	163	148	47	368	335
3	OMLB300	1	9.0	100	38	16.3	1.77	191	181	62	368	405
6	OMLB600	2	9.0	100	39	26.7	3.55	191	244	78	368	550

COMPLIES WITH AS/NZS1418.2

Meets or exceeds all relevant world standards

M3 CHAIN HOISTS

Capacities: 500kg to 10 tonnes

The PWB Anchor M3 Series Chain Blocks have been designed for maximum durability and safety with continuous heavy-duty industrial application.

Available in standard lift heights of 3 and 6 meters, these superior units can be close coupled to PWB Anchor Push and Geared Trolleys for further reduced headroom. Optional lift heights and spark resistant models also available.



CAPACITY tonnes	HEADROOM mm	CLOSE HEADROOM mm	CHAIN DIA. mm	CHAIN FALLS No.	NET WEIGHT kg
0.5	360	405	5.0	1	10.0
1	440	440	6.3	1	11.5
1.5	470	470	7.1	1	14.5
2	500	520	8.0	1	21.0
3	540	595	7.1	2	24.0
5	640	720	9.0	2	41.0
7.5	810	865	9.0	3	63.0
10	780	890	9.0	4	83.0

COMPLIES WITH AS1418.2

L5 LEVER HOISTS

Capacities: 800kg to 9 tonnes

PWB Anchor L5 Lever Hoists are designed for heavy-duty work in the most demanding application. All models feature a patented 'free-wheel safety brake system' in standard lift height of 1.5 metres. Optional lift heights and "overload protection device" also on request.



CAPACITY tonnes	HEADROOM mm	LEVER LENGTH mm	CHAIN DIA. mm	CHAIN FALLS No.	NET WEIGHT kg
0.8	280	245	5.6	1	5.7
1.6	335	265	7.1	1	8.0
3.2	305	415	10.0	1	15.0
6.3	540	415	10.0	2	26.0
9.0	680	415	10.0	3	40.0

COMPLIES WITH AS1418.2

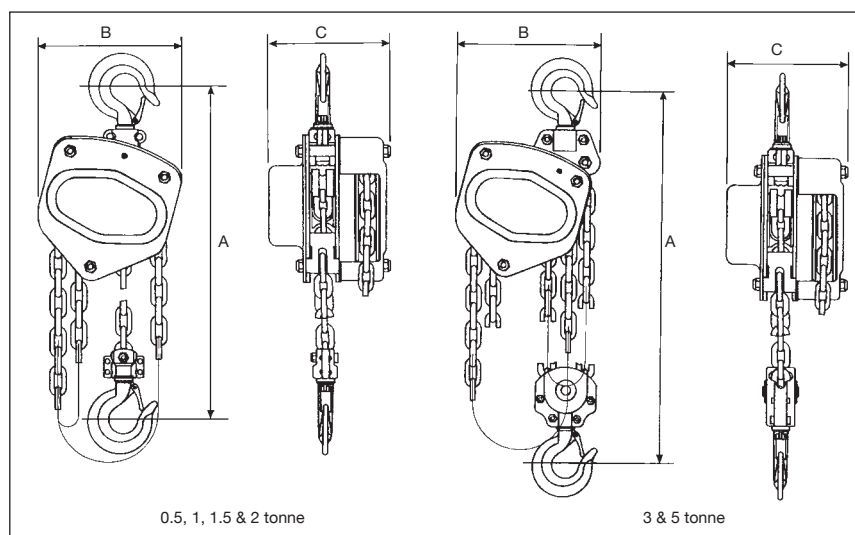
LOADSAFE CHAIN HOISTS

Capacities: 500kg to 50 tonnes

FEATURES

- Lightweight robust construction
- Super strength alloy loadchain
- Fully machined liftwheel
- Minimum headroom
- Minimum effort to raise maximum load
- Cast steel safety latches
- Fully enclosed gear train
- Lower hook complete with trust race
- Weather protected automatic Weston brake with unique twin pawls
- Galvanised handchain as standard
- Durable baked enamel paint protection
- Stainless steel labels
- Spare parts always available

Loadsafe Chain Hoists are fitted with an overload - activated clutch which protects the operator from injury and the hoist from damage. Should an overload occur, the hoist will automatically stop transmitting the load, warning the operator to either reduce the load or select a hoist with a higher lifting capacity. Even when clutch is activated the load can be transmitted in the "DOWN" direction.



Product Code Working Load Limit	SOCB05LS 0.5t	SOCB1LS 1t	SOCB1.5LS 1.5t	SOCB2LS 2t	SOCB3LS 3t	SOCB5LS 5t	SOCB10LS 10t
Standard lift	3m	3m	3m	3m	3m	3m	3m
Falls of chain	1	1	1	1	2	2	4
Effort to lift W.L.L.	23kg	30kg	32kg	35kg	27kg	41kg	39kg
Net weight	10kg	12kg	13kg	22kg	32kg	46kg	68kg
Loadchain diameter	6mm	6mm	8mm	8mm	8mm	10mm	10mm
CLEARANCE DIMENSIONS (mm)							
A (Headroom)	270	317	399	414	465	636	750
B (Width)	127	158	187	187	210	253	373
C (Depth)	131	140	161	161	161	161	184
Hook opening (upper)	30	28	36	33.5	40	50	64
Hook opening (lower)	30	28	36	33.5	40	50	64

COMPLIES WITH AS/NZS1418.2

Meets or exceeds all relevant world standards



VITAL CHAIN HOISTS

Capacities: 500kg to 20 tonnes

A range of heavy-duty chain blocks suitable for many applications in the industrial, rural, construction and mining industries.

FEATURES

- Made in Japan from optimum high quality steel to conform to strict J.I.S. and I.S.O. regulations
- Designed for long term use providing the lowest possible per-use cost
- Quality caged needle bearing on load sheave and thrust bearing on bottom hook
- Hardened special alloy steel loadchain identification marked to relevant standards
- Corrosion protection



Model		05VH5	10VH5	15VH5	20VH5	30VH5	50VH5	75VH5	90VH5	92VH5	
Capacity	tonne	0.5	1.0	1.5	2.0	3.0	5.0	7.5	10	15	20
Standard Lift	m	3.0	3.0	3.0	3.0	3.0	3.0	3.0	3.0	3.0	3.0
Net Weight	kg	8.6	11.5	13.8	21.6	22.0	41.0	60.5	77.5	150	190
Headroom C	mm	305	345	370	425	505	635	740	760	850	870
Pull to Lift Load	kg	25	33	34	34	35	39	41	41	41x2	41x2

COMPLIES WITH AS/NZS1418.2

Meets or exceeds all relevant world standards.

VITAL LEVER HOISTS

Capacities: 250kg to 9 tonnes

An extremely sturdy, highly versatile tool suitable for a multitude of lifting, pulling, tensioning and securing applications.

FEATURES

- One touch operation for free chain adjustment
- Light weight and exceptionally strong
- Robust all-steel construction ensures safety
- Used extensively in shipbuilding, coal mining, forestry, power transmission, construction etc.
- Special underground mining model "VR" available



Model		NR2-03	NR2-05	NR2-08	NR2-10	NR2-15	NR2-30	NR2-60	NR2-90
Capacity	tonne	0.25	0.5	0.75	1	1.5	3	6	9
Standard Lift	m	1.0	1.5	1.5	1.5	1.5	1.5	1.5	1.5
Net Weight	kg	1.9	3.5	6.0	7.2	9.8	16.6	27.0	47.3
Headroom C	mm	230	260	295	325	350	425	565	680
Pull to Lift Load	kg	30	34	21	23	27	38	39	40
Chain Diameter	mm	4.0	5.0	5.6	6.3	7.1	9.0	9.0	9.0

COMPLIES WITH AS/NZS1418.2

Meets or exceeds all relevant world standards.

OZ LOADSAFE LEVER HOIST

Capacity: 800kg to 9 tonnes

Features:

- Unique hand wheel and free wheel knob design.
- Improved hook tips with cast self-locking latches.
- Innovative, patented friction disc with no brake discs required.
- Caged roller bearings on the load sprocket.
- Dacromet finish on the ratchet disc, cam, disc hub and change over disc.
- Integrated safety overload clutch.
- Weston brake with twin pawls.
- Stainless steel name plates.
- Minimum handle effort required to raise loads.
- Loadchain includes enlarged end ring.
- Super strength plated alloy loadchain.
- All steel construction.
- Powder coated paint finish.



Applications:

This new robust lever hoist has many application choices for use in construction, engineering, forestry, automotive, offshore and underground mining when a safe reliable hoist with increased working load is needed.

Complies to AS1418.2

Meets or exceeds the following standards:

ANSI B30.21

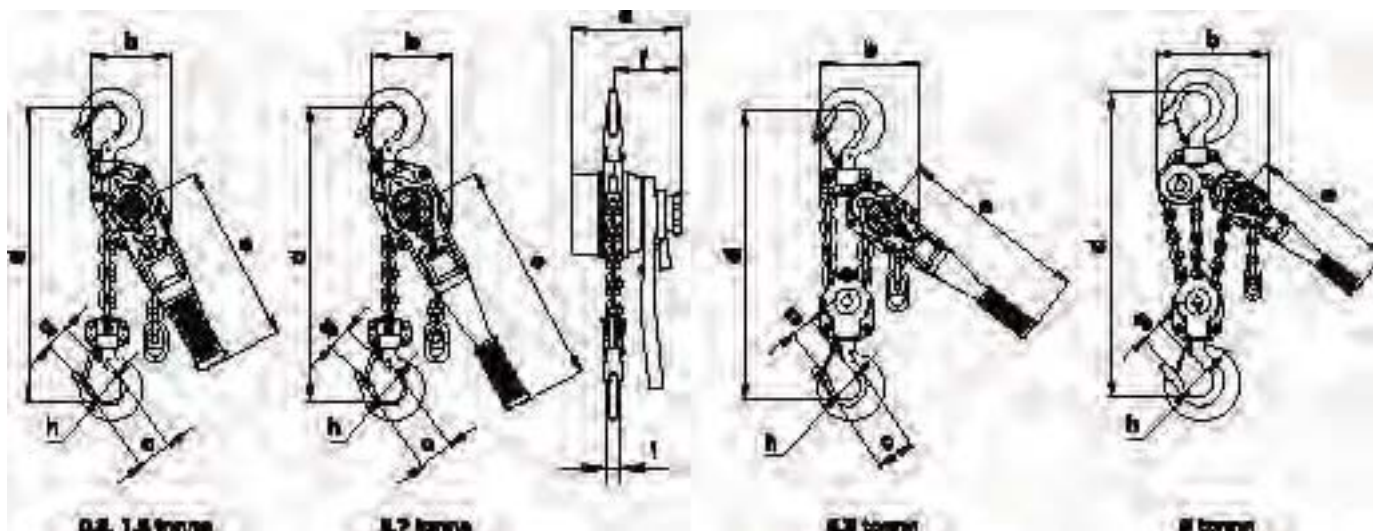
ANSI B30.16



Product Model Code		LSLH08	LSLH16	LSLH32	LSLH63	LSLH90
Capacity W.L.L.	tonnes	0.8	1.6	3.2	6.3	9.0
Loadchain falls		1	1	1	2	3
Loadchain Dia. x pitch	mm	5.6x15.7	7.1x19.9	10x28	10x28	10x28
Pull to lift rated load	N	215	303	372	382	392
Proof Load	kg	1200	2400	4800	9500	13500
Stand lift	m	1.5	1.5	1.5	1.5	1.5
Net weight	kg	5.7	8.0	13.6	26.0	40.0
Gross weight	kg	6.1	8.5	14.2	26.6	46.5
Extra weight/metre of chain	kg	0.7	1.1	2.3	4.7	7.0
Dimensions mm	a	146	164	196	196	196
	b	119	126	159	218	298
	c	41.5	52	61.9	84.3	-
	d	280	335	395	540	680
	e	245	265	415	415	415
	f	96	100	114	114	114
	g	26.5	35.5	43	53	64
	h	35.5	42.5	50	60	85
	i	14	19	24.5	34	40

COMPLIES WITH AS/NZS1418.2

Meets or exceeds all relevant world standards



LOADSET GIRDER CLAMP

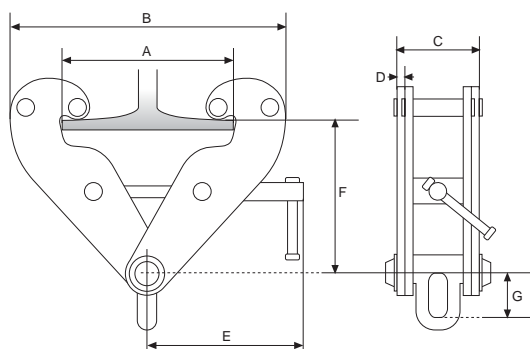


Capacities: 1 tonne to 10 tonnes

Loadset Girder Clamps are a versatile lifting tool designed for heavy-duty applications, providing an easy to operate and secure means of attaching a lift point to an overhead beam.

- Available in 1t, 2t, 3t, 5t and 10t capacities
- Easily adjusts to suit any girder width in range
- Bottom eye allows simple attachment of a chain block or lever hoist
- Bottom eye swivels for sideways lifting (50% of WLL at 45°)
- Robust all-steel construction
- Stainless steel ID plates
- Proof Load Tested at manufacture (2 x WLL)

CONFORMS TO AS4991



PRODUCT CODE	WLL tonnes	BEAM FLANGE RANGE mm	WEIGHT/unit KG	DIMENSIONS mm								
				Max. A	Max. B	Min. B	C	D	E	Max. F	Min. F	G
GCL01LS	1	75-230	4.5	284	375	180	64	4	218	160	102	45
GCL02LS	2	75-230	5.0	1284	375	180	74	6	218	160	102	45
GCL03LS	3	80-320	10.5	365	498	220	103	8	271	240	168	58
GCL05LS	5	80-320	11.0	365	498	220	110	10	271	240	168	58
GCL10LS	10	90-320	16.0	356	514	250	120	12	280	242	172	90

LOADSET GIRDER TROLLEYS

Push Type

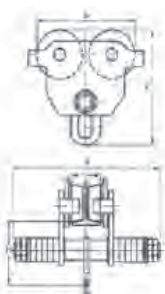
Capacities: 1 tonne to 20 tonnes



- Lightweight robust construction
- Super-quick adjustment to any monorail
- Durable baked enamel paint protection

- Precision ball bearing trolley wheels

CONFORMS TO AS/NZ1418.2

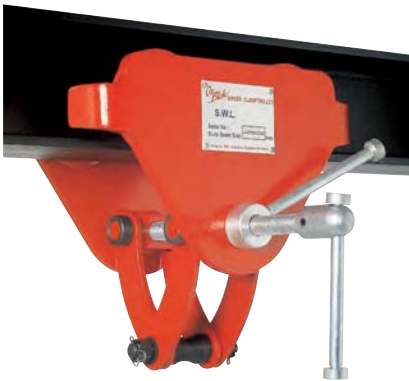


Product Code		GTP1000LS	GTP2000LS	GTP3000LS	GTP5000LS	GTP10000LS	GTP20000LS
Rated Capacity		1.0T	2.0T	3.0T	5.0T	10.0T	20.0T
Adjustable Beam Width	mm	64-305	88-305	100-305	114-305	124-305	136-305
Clearance Dimensions	A	413	429	445	457	475	551
	B	246	276	332	377	442	555
	C	222	263	309	353	396	498
	H	125	150	171	196	190	233
Min. Radius Curve	m	1.0	1.1	1.3	1.4	2.0	3.5
Net Weight	kg	11.5	19	29	43	85	165



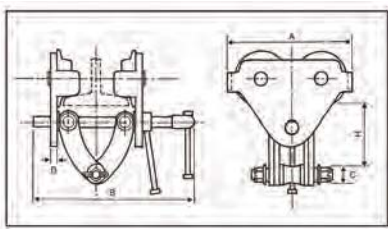
GIRDER TROLLEY WITH CLAMP

Capacities: 1 tonne to 5 tonnes

- Robust all-steel construction
- Durable baked enamel paint protection
- Super-quick adjustment to any girder width in range
- Spare parts always available

Product Code	OGCT01	OGCT02	OGCT03	OGCT05
Working Load Limit kg	1000	2000	3000	5000
Test load kN	12.25	24.5	36.8	61.3
Min. radius mm	1.1	1.3	1.5	1.7
Clearance	A	260	260	330
	B	340	340	480
	C	Ø20	Ø20	Ø24
	D	10	12	19
Dimensions mm	H	171-232	237-285	160-200
				225-280
Beam width mm	63-203	76-203	85-210	100-305
Net Weight kg	11	13	26	46

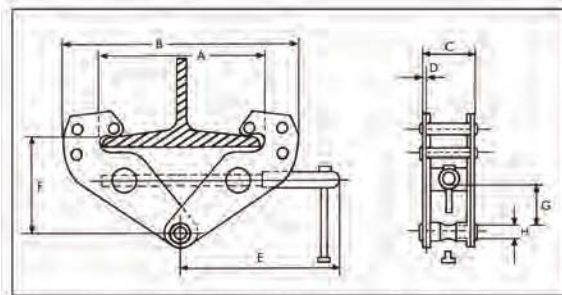
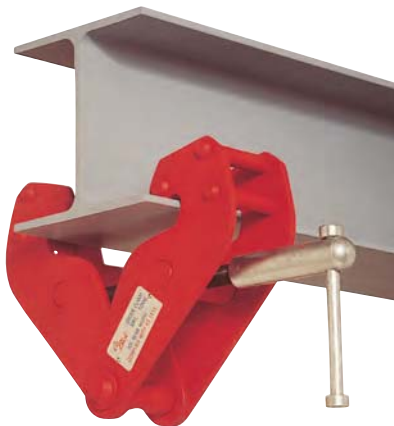


COMPLIES WITH AS/NZS1418.2

GIRDER CLAMPS

Capacities: 1 tonne to 10 tonnes

- Robust all-steel construction
- Durable baked enamel paint protection
- Super-quick adjustment to any girder width in range
- Spare parts always available



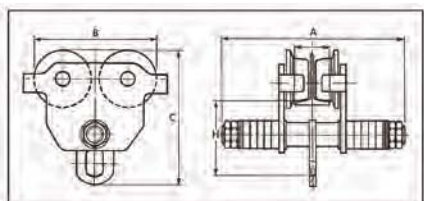
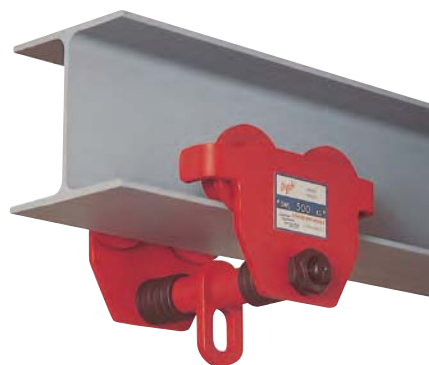
Product Code	Working Load Limit kg	Adjustable Beam Width mm	A	B		C	D	E	F		G	H
			max. mm	min. mm	max. mm				min. mm	max. mm		
OGC1	1000	75-230	278	182	380	64	4	217	150	90	26	19
OGC2	2000	75-230	278	182	380	74	6	217	150	90	26	21
OGC3	3000	80-320	356	220	500	100	8	277	220	145	50	23
OGC5	5000	90-320	356	220	500	112	10	277	220	145	47	29
OGC10	10000	90-320	356	250	520	120	12	285	230	160	52	39

COMPLIES WITH AS4991

GIRDER TROLLEYS

PUSH TYPE

Capacities: 500kg to 10 tonnes

Oz Blok

- Lightweight robust construction
- Super-quick adjustment to any monorail
- Durable baked enamel paint protection

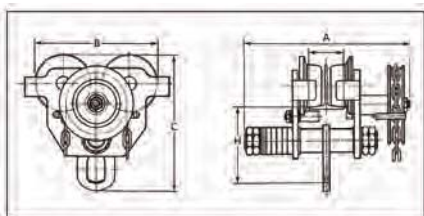
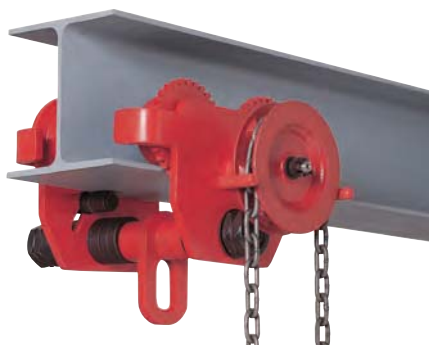
- Precision ball bearing trolley wheels

COMPLIES WITH AS/NZS1418.2

Product Code		OPT05	OPT1	OPT2	OPT3	OPT5	OPT10
Rated Capacity		0.5 t	1 t	2 t	3 t	5 t	10 t
Adjustable Beam Width	mm	64-152	64-210	88-210	102-305	108-305	117-305
Clearance Dimensions	A	254	318	335	357	368	405
	B	216	260	300	345	395	455
	C	195	239	286	336	393	500
	H	110	135	161	185	220	280
Min. Radius Curve	m	.9	1.0	1.1	1.3	1.4	1.7
Net Weight	kg	8	14	21	36	51	90

GEARED TYPE

Capacities: 1 tonne to 20 tonnes



- Lightweight robust construction
- Super-quick adjustment to any monorail
- Durable baked enamel paint protection

- Precision ball bearing trolley wheels

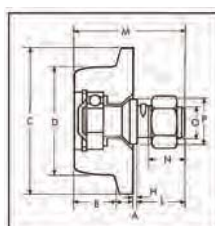
COMPLIES WITH AS/NZS1418.2

Product Code		OGT1	OGT2	OGT3	OGT5	OGT10
Rated Capacity		1 t	2 t	3 t	5 t	10 t
Adjustable Beam Width	mm	64-210	88-210	102-305	108-305	117-305
Clearance Dimensions	A	380	390	513	430	468
	B	260	300	345	395	470
	C	239	286	336	393	500
	H	135	161	188	220	280
Min. Radius Curve	m	1.0	1.1	1.3	1.4	1.7
Net Weight	kg	18	27	43	60	105

GIRDER TROLLEY WHEELS

SINGLE FLANGE PLAIN TYPE

Capacities: 500kg to 10 tonnes



- Trolley wheels have a machined thread for smooth operation on both R.S.J. or Universal beams
- All Steel construction
- All wheels come complete with ball bearing, axle, nut, dust cover and circlip
- Available in cast iron or fully forged

Oz Blok Product Code	Trolley Capacity on 4 wheels	Wheel Dia. D mm	A mm	B mm	C mm	Axles					
						H mm	L mm	M mm	N mm	O mm	P mm
OTW005	500 kg	58	12	27	82	3	31	72	24	M20	32
OTW01	1 tonne	75	12	28	102	3	33	76	26	M20	32
OTW02	2 tonne	90	13	32	120	3	40	88	29	M24	36
OTW03	3 tonne	110	13	36	141	3	46	99	33	M30	42
OTW05	5 tonne	120	16	38	156	3	58	115	39	M36	48
OTW010	10 tonne	150	20	43	189	3	78	143	54	M48	67

GEARED GIRDER TROLLEYS



HEAVYWEIGHT CHAMPIONS

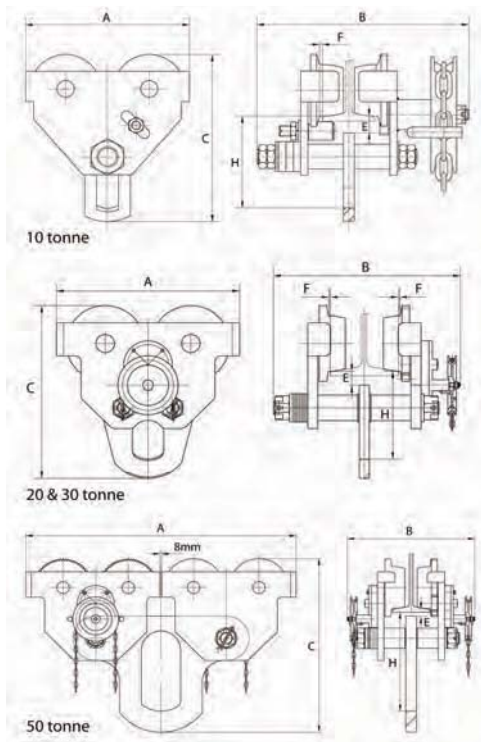
OzBlok now offer Geared Girder Trolleys in these large capacities for use with Hand Chain Hoists and other applications.

Designed to suit a wide range of monorails and fabricated beams, these trolleys have many applications in the mining, oil & gas, heavy construction and marine industries.

Complies to AS/NZS1418.2

FEATURES:

- Strong rugged construction
- Super quick adjustment to any beam within width range
- Powder coated paint finish
- Precision ball bearing trolley wheels with machined thread for smooth operation



Product Code	OGT10	OGT20	OGT30	OGT50
Rated Capacity	10t	20t	30t	50t
Standard Adj. Beam Width* mm	125-210	210-330	**	**
Clearance Dimensions mm	A	455	642	1242
	B	487.5	647	585
	C	490	622	832
	E	35	55	45
	F	4.5	4.5	4.5
	H	275.5	315	312
Min. Radius Curve	m	2.5	4.5	6.0
Net Weight	kg	103	256	577

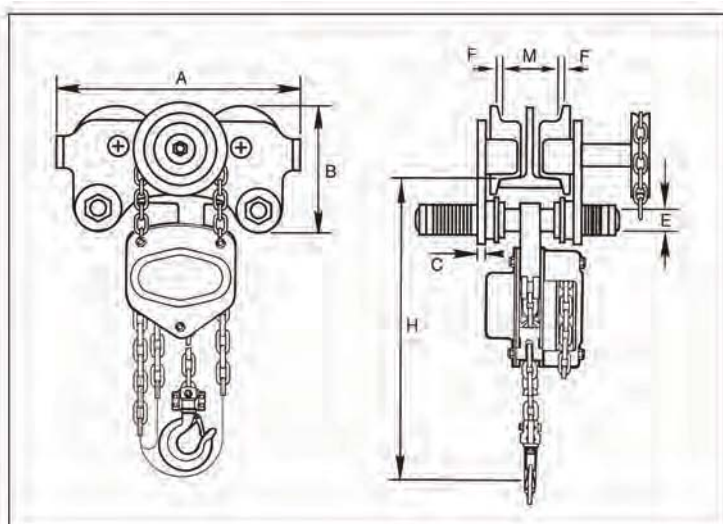
* Other widths available on request

** Manufactured to customer's requirements

COMBINED HOISTING ASSEMBLY

S Series Chain Block Close Coupled to Push or Geared Girder Trolley**Capacities: 1 tonne to 5 tonnes***Orbik*

- Hoist and trolley integrated offer minimum headroom and theft protection
- Robust all steel construction
- Minimum effort to raise load
- Super strength alloy steel chain
- Stainless steel name plates
- Durable baked enamel paint protection
- Weather protected Weston brake
- Cast steel safety latches
- Spare parts always available
- Over load protection offered as optional extra



Product Code	OCHRG1/0	OCHRG2/0	OCHRG3/0	OCHRG5/0
Rated Capacity tonnes	1	2	3	5
Test load kN	15	30	45	75
Min. radius m	1	1.2	1.4	1.6
Pulling force to lift full load N	40	70	65	100
Standard Lift m	3	3	3	3
Dimensions mm	A	277	302	363
	B	170	194	230
	C	10	12	14
	D	283	295	304
	E	M22	M27	M30
	F	≈3	≈3	≈3
Beam width mm	58-180	58-180	74-180	98-180
Min. headroom H mm	375	438	593	741

COMPLIES WITH AS/NZS1418.2
Meets or exceeds all relevant world standards



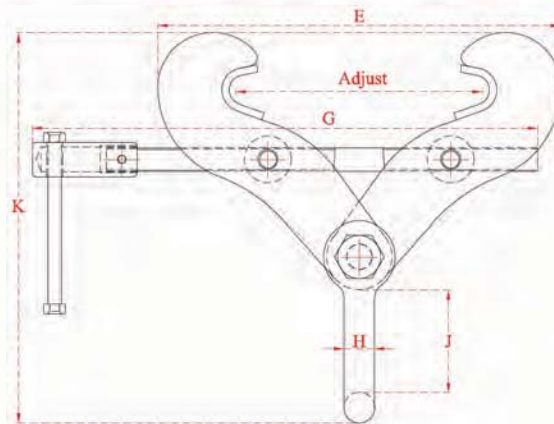
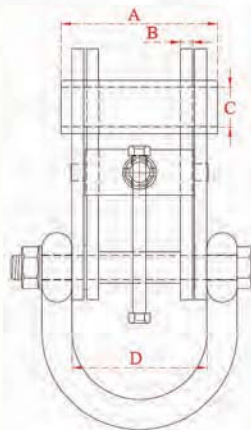
Fixed Jaw **SUPERCLAMP** Adjustable Girder Clamps

Incorporating Adjusting Mechanism and Lifting Shackle.

These girder clamps are truly versatile in application and may be used for lifting, pulling, or as an anchor point. Designed specifically to provide maximum jaw grip adjustment.

These products are engineered for practical use where mobility is essential. The clamps are speedily applied and do not require additional tools or width adjusting components, such as spacing washers. The left and right-hand threaded adjusting bar ensures a secure grip on the beam flange.

			Dimensions									
Model	WLL	Adjust	A	B	C	D	E	G	H	J	K	Weight
S1	2032kg	76-190	125	3	22	90	188	275	20	77	250	4kg
S2	3048kg	76-190	125	6	22	90	188	275	20	77	250	5kg
S2A	3048kg	76-190	130	12.5	22	102	250	275	20	103	268	8kg
S2AX	3048kg	127-350	130	12.5	22	102	375	560	20	102	373	11.5kg
S3	4064kg	150-254	130	10	22	112	327	410	25	98	332	11kg
S3A	5080kg	150-305	140	12.5	32	116	373	410	25	110	360	15kg
S3X	5080kg	76-190	130	12.5	22	116	237	295	25	110	300	10kg
S4	7112kg	101-228	140	12.5	42	118	323	410	32	120	382	17.5kg
S4A	10160kg	203-457	140	20	42	118	498	560	32	112	476	28kg
S4S	6096kg	203-457	140	12.5	42	116	498	560	25	110	459	18.8kg
S12	15241kg	203-457	170	20	50	116.5	611	660	40	185	616	49.5kg
S14	15241kg	406-610	175	20	63	116.5	795	810	40	185	673	58.5kg





Fixed Jaw **SUPERCLAMP** Adjustable Girderdogs

Incorporating Adjusting Mechanism and Lifting Shackle.

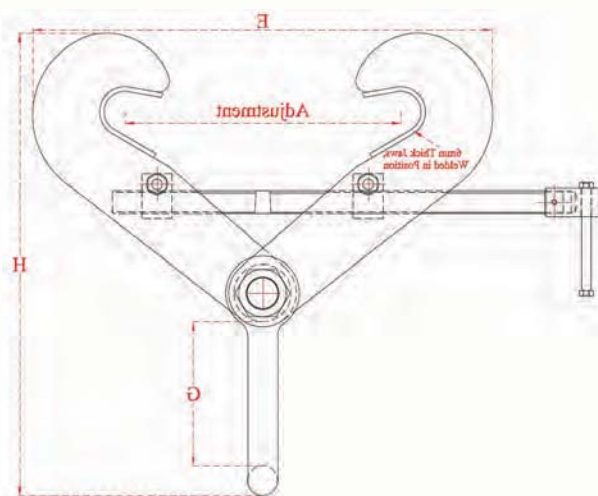
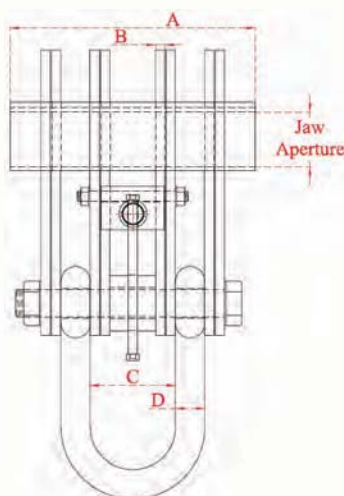
SUPERCLAMP Girderdogs incorporate all the reputedly excellent and reliable design features for which our products are known.

The Girderdogs design is enhanced by a well balanced distribution of side plates, ensuring maximum grip and hold over an adequate length of girder or beam flange.

They are safe in use, and once in position, are speedily applied to a steel beam.

No additional width adjusting tools or components are required.

			Jaw Aperture	Dimensions							Weight
Model	WLL	Adjust		A	B	C	D	E	G	H	
S15	20320kg	203-457	51mm	335	12.5	116	40	756	185	616	65.5kg
S16	20320kg	406-610	63mm	350	12.5	116	40	795	185	673	77kg
S17	25400kg	203-457	51mm	335	15	130	45	611	192	621	75.5kg
S18	25400kg	406-610	63mm	350	15	130	45	795	185	678	90kg
S19	30480kg	203-457	63mm	350	20	130	45	624	185	626	92kg
S20	30480kg	406-610	76mm	350	20	130	45	785	185	691	107kg



Universal **SUPERCLAMP**

For side load applications where conventional **SUPERCLAMPS** are unsuitable.

The universal **SUPERCLAMP** has been designed not only for vertical use, but also for side load applications, where conventional clamps are not suitable. This clamp is truly versatile in application and can be used for lifting, pulling or as an anchor point.

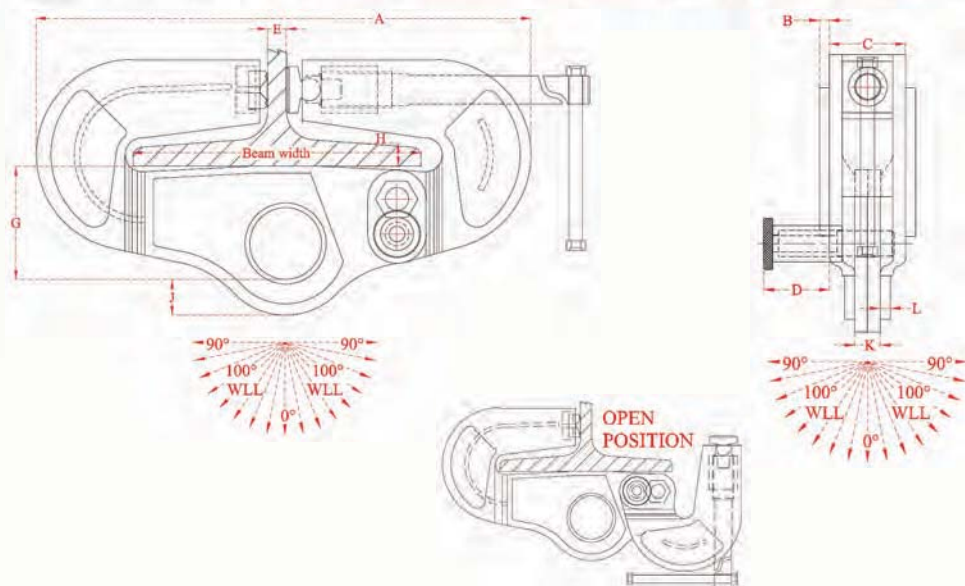
It can be loaded at any angle and eliminates the use of spreader beams in various lifting operations.

With a low headroom anchor point, it can be used as a single or twin point lifting, giving positive grip and quick application combined with lightweight construction.



WARNING: Do Not Exceed Working Load Limits or use this equipment for lifting Flat Plate Sections (not to be used as a plate lifting clamp).

Model	WLL	Beam Width	Dimensions										Weight
			A	B	C	D	E	G	H	J	K	L	
USC3A	3048kg	125-204	387	N/A	70	48	32	100	25.4	28	20	N/A	13.5kg
USC4	4064kg	125-305	518	10	70	48	32	100	25.4	28	10	10	23.5kg
USC5	5080kg	125-305	524	10	75	48	32	120	25.4	38	25	10	28.5kg
USC5D	10160kg	125-305	524	10	75	102	32	120	25.4	38	25	12.5	33.5kg
USCD400	10160kg	225-400	624	10	75	102	32	120	25.4	38	25	12.5	43.1kg



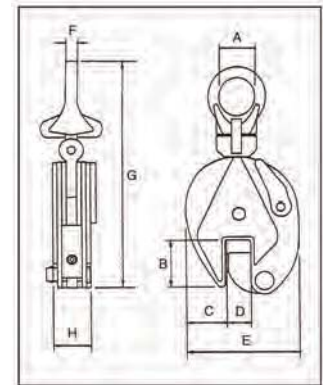
UNIVERSAL PLATE CLAMPS



Capacities: 500kg to 5 tonnes

- Strong all-steel construction
- Safety lock
- Wide plate acceptance
- Hardened pressure plate and tongue
- Durable baked enamel finish
- Spare parts available

COMPLIES WITH AS4991



PRODUCT CODE	RATED CAPACITY t	TEST LOAD kN	MAX. JAW OPENING mm	DIMENSIONS mm								NET WEIGHT KG	VOLUME cm
				A	B	C	D	E	F	G	H		
OUVPC-05	0.5	7.35	15	30	43	34.5	0-17	103	10	212	36	2	23 x 5 x 11.5
OUVPC-1	1	14.7	20	48	63	51	0-22	138	12	294	50	4.8	31 x 7 x 16
OUVPC-2	2	29.4	25	68	76	59	0-27	164	16	370	52	6.5	38 x 8 x 19
OUVPC-3	3	44.1	30	74	85	56	0-32	193	20	418	78	15	45 x 11 x 22
OUVPC-5	5	73.5	50	80	90	65	0-52	240	22	450	88	23	48 x 14 x 27

HORIZONTAL PLATE CLAMPS

Capacities: 1.5 tonne to 5 tonnes

- Compact size and easy to carry
- Lightweight and safe
- Strong all-steel construction
- Durable baked enamel finish
- Spare parts available

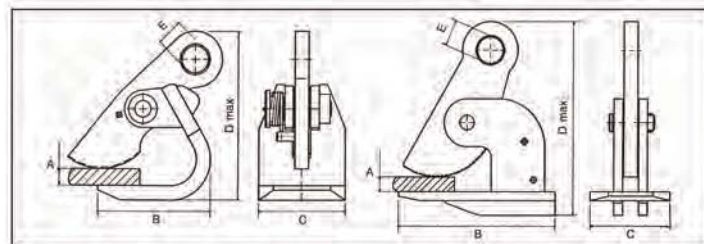
COMPLIES WITH AS4991



1.5t



3t & 5t



PRODUCT CODE	RATED CAPACITY t/pr	TEST LOAD t/pr	MAX. JAW OPENING mm	DIMENSIONS mm					NET WEIGHT SINGLE - KG	NET WEIGHT PAIR - KG	VOLUME cm
				A	B	C	Max. D	E			
OHPC15	1.5	3.0	50	0-52	127	100	218	30	4.3	8.6	17 X 12 X 24
OHPC30	3	6.0	50	0.52	220	110	270	36	7.7	15.4	26 X 13 X 20
OHPC50	5	10.0	60	0-62	260	130	315	49	14.1	28.2	30 X 15 X 23



J.C. Renfro & Sons, Inc. has been a leader in the manufacturing and marketing of lifting products for over 70 years.

Model DWS



Model HRS



Model JPA



Model SCPA



Model NM



RENFROE CLAMPS

Model DWS Locking Type: Model DWS is a horizontal lifting clamp utilizing Renfro's famous "lock-closed" feature. This clamp comes in four sizes:

- 1/4 Ton: 0 – 1/2" opening
- 1/2 Ton: 0 – 3/4" opening
- 1-1/2 Ton: 0 – 1" opening
- 3 Ton: 0 – 1-1/4" opening
- Recommended for use in pairs.

Model HRS Locking Type: The Model HRS is a horizontal lifting clamp that has a spring loaded open and closed position. The spring closed position allows one-man operation of multiple clamps. The clamps stay in position where they are attached until spring open is actuated. These clamps must be used in pairs, sets of pairs, or in a tripod arrangement for transporting plates horizontally.

Model JPA Locking Type: The Model JPA is a vertical lifting clamp capable of turning a single plate or member from horizontal to vertical to horizontal through a 180 degree arc. Incorporates a push button auxiliary lock. Permits side loading of lifting shackle to 90 degrees by derating of clamp's rated capacity. Model JPA incorporates a pivoting shackle that permits side loading of the lifting shackle at 100 percent of rated capacity from vertical to 30 degrees, 75 percent of rated capacity between 30 and 45 degrees and 50 percent of rated capacity between 45 and 90 degrees.

Model SCPA Locking, Screw Type: The SCPA clamp is capable of handling steel plate from horizontal to vertical to horizontal through a 180 degree arc and may be used for handling plate at rolling and forming machines. These clamps feature a spring loaded pivoting cam jaw that "cams in" when a load is applied to the lifting shackle. Clamp is capable of handling plate horizontally when used in pairs or sets of pairs, or in a tripod arrangement.

*Pivoting shackle assembly, as shown, is available on capacities of 3 tons and larger.

Model NM Locking, Screw Type: The Model NM clamp (non-marring) is manufactured with smooth gripping surfaces to prevent marring when gripping stainless steel, copper, aluminum and other polished metal plates. Due to the variety of conditions that may exist in handling these plates, it is recommended that these clamps be used in pairs and attached to a chain or wire rope sling, supported by a spreader beam.

The Model NM is supplied with stainless steel gripping surfaces and is available with steel or bronze upon request. The model NM is not intended for use in transportation of plates using mobile equipment where shocking of the load may occur.

Renfro clamps standard jaws are suitable for optimum hardness materials of 300 Bhn and 360Bhn and for materials with even higher hardness number we have the non-marring clamp.

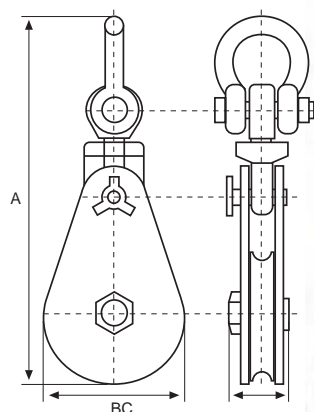
Please refer to the complete catalogue for this brand for full product range and specifications.



HEAVY DUTY SNATCH BLOCKS

Capacities: 2 tonne to 50 tonnes

- Heavy duty construction
- Fitted with grease nipples
- Swivel Shackle head fitting
- Conforms to AS2089



WLL	SHEAVE DIAMETER	WIRE ROPE DIAMETER	A mm	B mm	C mm	UNIT WEIGHT
2t	75mm	8 - 10mm	290	83	75	4kg
4t	150mm	10 - 13mm	415	160	75	9kg
8t	200mm	16 - 18mm	530	210	95	19kg
10t	250mm	18 - 20mm	680	260	115	35kg
12t	250mm	20 - 22mm	680	260	115	35kg
15t	300mm	24 - 26mm	890	310	135	65kg
22t	355mm	26 - 32mm	960	365	140	90kg
30t	500mm	32-38mm	1230	520	155	210kg
50t	600mm	44 - 52mm	1585	630	210	400kg

MANUAL SHEAVES & SHEAVE BLOCKS

Capacities: 250kg to 2 tonnes

An extensive range of manually operated Sheave and Sheave Blocks has been specifically designed for use with Manilla and Wire Rope. With fully interchangeable sheaves and supplied with either drop forged swivel hooks or eyes, this range comes with becketts standard on all single and double bolcks.

Bronze bushes and safety latches are standard across the range.



WLL	CAPACITY			ROPE Dia.		AXLE DIA. mm	BOSS WIDTH mm
	SINGLE & SNATCH	DOUBLE	TREBLE	MANILLA mm	WIRE mm		
63	250kg	250kg	250kg	10	5	12.5	20.5
75	250kg	250kg	250kg	12	6	12.5	20.5
100	500kg	750kg	750kg	16	8	19	25.4
125	1t	1t	1t	20	10	22	29.5
150	1t	1.5t	1.5t	24	12	25	33.4
200	2t	3t	4t	32	16	35	46.5

KITO ELECTRIC CHAIN HOISTS

Capacities: 250kg to 5 tonnes

With safety, durability and ease of maintenance in mind, the new ER2 Electric Hoist is environmentally friendly with its new compact, lightweight and energy efficient design.

Offering thermal protection to prevent the motor from overheating, upper and lower limit switches, CH (Counter/Hour) meter for recording and displaying of operational data, and featuring the variable speed inverter for superior load handling and positioning accuracy, are all provided as standard equipment.

Coupled with the new MR2 Motorised Trolley, the ER2/MR2 combination allows for easier and accurate load positioning in the work place.

Features:

- CH (Counter/Hour) meter for recording and displaying of operational data for appropriate maintenance.
- Friction clutch for overload protection from over-winding and overloading.
- Upper-lower limit switch provided as standard. Cover belt attached to the controller cover and gear case for easy access and maintenance.
- Thermal protection to prevent motor from overheating.
- Current-driven electromagnetic brake for secure load holding.
- Helical gearing for long life and quiet operation.
- External motor fan reduces heating during frequent operation.
- Chain container.
- Dust proof and water-jet proof protection – IP55 rating.
- Original design, push button control with emergency stop – IP65 rating.
- Single die-cast, lightweight and compact aluminium body.
- Smooth action chain guide.
- Nickel-plated loadchain for increased resistance against wear and corrosion.
- Bottom hooks swivels 360° and designed to open gradually under excessive overload. Safety latches fitted to top and bottom hooks.



Capacity (WLL)	Model	Lifting Speed (m/min)	Motor Rating		Loadchain (dia x falls)	Hook Suspended		MR2 Motorised Trolley		
			Output (kW)	Rating (%ED)		Headroom (mm) "C"	Weight (kg)	Headroom (mm) "C"	Min. Radius (m)	Weight (kg)
250kg	ER2-003S	9.1	0.56	60	4.3x1	350	27	375	0.8	58
500kg	ER2-005L	3.8	0.56	60	6.0x1	370	33	395	0.8	64
500kg	ER2-005S	7.3	0.9	60	6.0x1	370	37	395	0.8	68
1 tonne	ER2-010L	3.5	0.9	60	7.7x1	430	47	435	0.8	77
1 tonne	ER2-010S	7.1	1.8	60	7.7x1	430	54	435	0.8	84
1.5 tonne	ER2-015S	4.5	1.8	60	10.2x1	510	72	505	0.8	110
2 tonne	ER2-020L	3.7	1.8	60	10.2x1	575	73	570	0.8	111
2 tonne	ER2-020S	7.0	3.5	60	10.2x1	590	91	585	0.8	129
2.5 tonne	ER2-025S	5.7	3.5	60	11.2x1	625	104	620	1.0	152
3 tonne	ER2-030S	4.4	3.5	60	10.2x2	785	107	765	1.0	155
5 tonne	ER2-050S	2.9	3.5	60	11.2x2	850	132	840	1.8	202

HITACHI ELECTRIC CHAIN HOISTS

Capacities: 250kg to 15 tonnes

- Easy to use remote controls
- Low voltage 24V at push button controls
- Electro-magnetic disc brakes
- Noiseless design chain bucket
- Overload protection



Single Phase / Single Speed

Model		1/4S1	1/2S1	1S1	2S1
Capacity	kg	250	500	1000	2000
Speed	m/min.	5	3.6	2.3	1.1
Motor	kW	0.25	0.32	0.4	0.4
Weight	kg	33	34	39	51
Headroom	mm	450	450	530	645

Three Phase / Single Speed

Model		1/4S	1/2S	1S	2S	1F	2F	3F	5F
Capacity	kg	250	500	1000	2000	1000	2000	3000	5000
Speed	m/min.	10	7.2	4.6	2.3	7.1	6.8	4.1	2.8
Motor	kW	0.45	0.63	0.8	0.8	1.3	2.4	2.4	2.4
Weight	kg	28	31	37	49	42	80	99	121
Headroom	mm	450	450	530	645	535	660	820	1020

Three Phase / Two Speed

Model		1/4SN	1/2SN	1SN	2SN	2FN	3FN	5FN
Capacity	kg	250	500	1000	2000	2000	3000	5000
Speed	m/min.	7.2/ 1.8	7.2/ 1.8	4.6/ 1.2	2.3/ 0.6	6.8/ 1.7	4.0/ 1.0	2.8/ 0.7
Motor	kW	0.32/ 0.08	0.63/ 0.16	0.8/ 0.2	0.8/ 0.2	2.4/ 0.6	2.4/ 0.6	2.4/ 0.6
Weight	kg	33	36	42	54	96	112	146
Headroom	mm	450	450	530	645	660	820	1020

Three Phase / Single and Two Speed Trolleys

Model		1ET	2ET	3ET	5ET
Capacity	kg	1000	2000	3000	5000
Travel Speed	m/min.	Standard ETS 10.5 Fast ETF 21.0 Two Speed ETN 21.0/ 5.3			
Travel Motor	kW	0.14		0.30	
Weight	kg	38	52	61	86
Standard beam width	mm	75-125	100-150	100-150	125-175
Min. radius	m	1.5	1.8	2.0	3.0



GIS-CH ELECTRIC CHAIN HOIST

**Capacities: 125kg to 5 tonnes**

- Compact design
- Robust construction
- Ease of maintenance
- Availability assured
- Advanced technology
- Swiss quality
- Protection Class IP 55 (Option IP 65)

WORLD'S FIRST IN SAFETY

- Double slip clutch (best overload protection ever)
- Five times more secure than the regulations require
- Highest safety with brake positioned after the slip clutch
- Standard geared limit switch: chain length to 120m
- Made for industrial use: body and covers completely built in aluminium

WORLD'S FIRST IN SERVICE AND HANDLING

- Easy adjustment of the slipping clutch
- No special tools or electronic devices required
- DC brake system maintenance free
- Chain guide removable without disassembly of the hoist
- Easy conversion from 1 to 2 fall (double load capacity)
- Ergonomic 2 and 4 button control pendant with support wire
- Silent working due to helical gears
- Standard low voltage control (42V)

COMPLIES WITH AS/NZS1418.2

Meets or exceeds all relevant world standards.

Type Description	Capacity in kg following FEM					Lifting Speed	Chain mm
	1BM M3	1AM M4	2m M5	3m M6	4m M7		
GCH 250/1N	250	200	160	125	100	8	4x12.3
GCH 250/1NF	250	200	160	125	100	8/2	4x12.3
GCH 250/2N	500	400	320	250	200	4	4x12.3
GCH 250/2NF	500	400	320	250	200	4/1	4x12.3
GCH 500/1N	500	400	320	250	200	8	5x15.3
GCH 500/1NF	500	400	320	250	200	8/2	5x15.3
GCH 500/2N	1000	800	630	500	400	4	5x15.3
GCH 500/2NF	1000	800	630	500	400	4/1	5x15.3
GCH 1000/1N	1000	800	630	500	400	8	7x22
GCH 1000/1NF	1000	800	630	500	400	8/2	7x22
GCH 1000/2N	2000	1600	1250	1000	800	4	7x22
GCH 1000/2NF	2000	1600	1250	1000	800	4/1	7x22
GCH 1600/1N	1600	1250	1000	800	630	8	9x27
GCH 1600/1NF	1600	1250	1000	800	630	8/2	9x27
GCH 1600/2N	3200	2500	2000	1600	1250	4	9x27
GCH 1600/2NF	3200	2500	2000	1600	1250	4/1	9x27
GCH 2000/1N	2000	1600	1250	1000	800	8	10x28
GCH 2000/1NF	2000	1600	1250	1000	800	8/2	10x28
GCH 2000/2N	4000	3200	2500	2000	1600	4	10x28
GCH 2000/2NF	4000	3200	2500	2000	1600	4/1	10x28
GCH 2500/1N	2500	2000	1600	1250	1000	6.4	10x28
GCH 2500/1NF	2500	2000	1600	1250	1000	6.4/1.6	10x28
GCH 2500/2N	5000	4000	3200	2500	2000	3.2	10x28
GCH 2500/2NF	5000	4000	3200	2500	2000	3.2/0.8	10x28

GIS LIFT CHAMP ELECTRIC CHAIN HOIST

Capacities: 125kg to 5000kg

Features:

- Compact design
- Robust construction
- Ease of maintenance
- Availability assured
- Advanced technology
- Swiss manufacture
- Lifting capacity up to 5000kg
- Protection class IP 55 (option IP 65)

World's first in safety

- Double slip clutch (best overload protection ever)
- Authority's safety test passed superbly!
- Five times more secure than the regulations require!
- Highest safety with brake positioned after the slip clutch
- Made for heavy use: body and covers completely built in aluminium
- Jamming of the chain excluded due to two-part plastic chain guide

World's first in service and handling

- Easy adjustment of the slipping clutch
- No special tools or electronic devices required
- DC brake system maintenance free
- Chain guide removable without disassembly of the hoist
- Easy conversion from 1 to 2 fall (double load capacity)
- Ergonomic 2-button control patent (optional)
- Silent working due to helical gears
- Designed for upright and inverted use without modification.
- Textile chain bag for upright and inverted use
- Flexible and high resistant hand grips
- Suspension parts (hook and eyebolt), chain and load hook also available black coated

COMPLIES WITH AS/NZS1418.2

Meets or exceeds all relevant world standards.



TYPE	Load capacity single fall kg	Classification following FEM	Lifting speed 1-fall m/min at 50 Hz (at 87 Hz frequency inverter controlled)	Number of poles on motor	Chain mm	Chain safety factor
LCH250/1NL, D8	250	1Bm	4 (6.96)	4	4	8.2
LCH500/1NL, D8	500	1Bm	4 (6.96)	4	5	6.4
LCH1000/1NL, D8	1000	1Bm	4 (6.96)	8	7	6.28
LCH2000/1NL, D8	2000	1Bm	4 (6.96)	4	10	6.4
LCH2000/1N, D8	2000	1Bm	8	2	10	6.4

* Capacities up to 5000kg available.

ELECTRIC CHAIN HOIST

CM LODESTAR ROAD WARRIOR



Capacities: 500kg to 2 tonnes

- No oil filled chamber - eliminating risk of oil leaks
- Motor Brake 375% capacity
- Both upper / lower adjustable limits
- Optional 'Encoders' available

The CM Lodestar is the most durable chain hoist on the market today. It's reliability is unsurpassed in the entertainment industry.

The CM Lobestar is the 'Rigger's Choice'

Speeds: 2 to 16MPM (metres per minute) Note: MPM rated at 50Hz

Lift: 18 metres - standard (other lifts available)

Voltages: Three-phase - 380-440/3/50

Low Voltage Control: 110 volts for long cable runs without voltage drop.

Voltage Board: Quick change plugs prevent improper voltage connections which can cause damage to the hoist, If misconnected, hoist will not operate.

No other component changes necessary.

Electrical: Finger safe wiring meets all electrical codes.

Adjustable Limit Switch: Prevents load from overtravel.



8 WAY MOTOR CONTROLLER

- 32 amp input
- Hand controller comes with pickle switch and Speakon NL4 connector
- Relay switch inside controller unit; supplies power to motor only when hand controller is activated.
- 3 phase rotator switch and indicator LEDs
- 24v DC control circuit for Hand Controller
- Individual switches and up/down LEDs for each channel
- Master/slave capacity with Speakon NL4 leads (not supplied)



6 x 8 way
Motor Controllers
shown in roadcases

TITAN ELECTRIC BUILDER'S HOIST



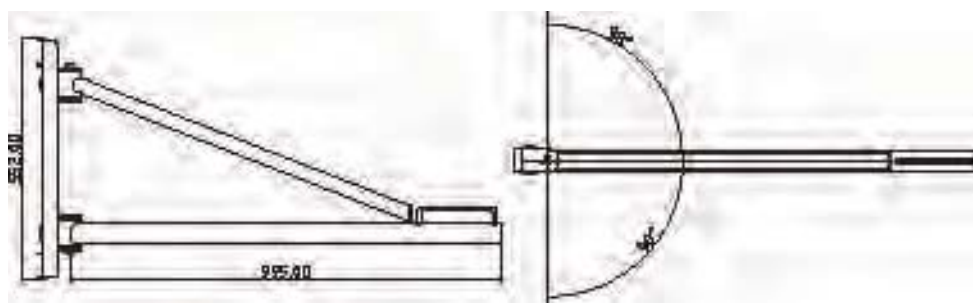
The Electric Builder's Hoist is designed for light lifting applications on building sites and various construction workplaces such as warehousing, buildings, storage areas, elevator liftwell maintenance, factories in general, as well as domestic application.

Features:

- Compact and lightweight design which allows easy mounting
- Automatic stop switch to avoid overwinding of the rope
- A reverse winding limit lever
- Double safety brake device including an electromagnetic brake for instant braking
- Operates on single phase 240 volt power supply
- 360° universal joint saddle with safety hook
- 5m power lead
- 10m hand held control pendant with safety switch
- Optional mounting arm bracket
- Spare parts available

Model Code		TBH230
Capacity	kg	230
Length	mm	240
Width	mm	180
Height	mm	660
Safety factor		WLLx1.5
Standard lift		30
Motor power/amps		1.3/7
Lifting speed	m/min	23
Wire rope	mm	5mm 7x19
Minimum grade wire rope		G1900 IWRC
Continuous usage rate p/hr	(min)	15
No. of start per hour		300
Control cable	m	10
Net weight	kg	16

MOUNTING BAR FOR TITAN ELECTRIC BUILDER'S HOIST



Product Code	Capacity	Max Rotation	Max Tube Size (mm)	Bracket Material	Clamp Material	Weight (kg)	Dimensions L x H (mm)
TBH-230MBSP	230kg	180°	50.8	Iron	Alloy	11	995 x 553

JDN AIR HOISTS

Flameproof TI Series

Capacities: 500kg to 100 tonnes

J.D. Neuhaus (JDN) has been manufacturing lifting equipment since 1745 and its pneumatic hoists are one of the safest and most cost efficient methods of pulling, lifting or lowering above or below ground where explosive atmospheres may occur.

- Manufactured in Germany under strict quality control and demanding tolerances
- Low maintenance design delivers 100% duty cycle in all environmental conditions
- Only six atmospheres of compressed air required
- Immune to dust, mud, dirt, grit, heat, vapours etc.
- Self-cooling pneumatic motor will not overheat
- Fail safe brake in case of air supply failure
- Ideal for use in mines, chemical plants, paint shops etc.
- Available with push, geared or air trolley



Shown with optional FI control



Mini 1000 Air Hoist
The JDN economy series also available

MODEL CODE No.		0.5TS	1TS	2TS	3TI	6TI	10TI	16TI	20TI	25TI	37TI	50TI	100TI
LIFTING CAPACITY tonnes		0.5	1	2	3.2	6.3	10	16	20	25	37.5	50	100
NUMBER OF CHAIN STRANDS		1	1	2	1	2	2	3	4	2	3	4	4
MOTOR OUTPUT kW		1.0	1.0	1.0	3.5	3.5	3.5	3.5	3.5	6	6	6	10.0
WEIGHT AT STANDARD LIFT (3m)	kg	27	28	34	86	110	156	240	285	498	880	855	2460
WEIGHT OF 1m CHAIN	kg	1.0	1.0	1.0	3.8	3.8	5.8	5.8	5.8	10.8	10.8	10.8	21.3
CHAIN DIMENSION	mm	7x21	7x21	7x21	13x36	13x36	16x45	16x45	16x45	22x66	22x66	22x66	31.5x90
AIR PRESSURE	bar	6	6	6	6	6	6	6	6	6	6	6	6
AIR CONSUMPTION AT FULL LOAD	Lifting	1.2	1.2	1.2	76	4.0	4.0	4.0	4.0	5.5	5.5	5.5	11.0
	Lowering	1.5	1.5	1.5	85	5.5	5.5	5.5	5.5	6.5	6.5	6.5	12.0
AIR CONNECTION		G½	G½	G½	G¾	G¾	G¾	G¾	G¾	G1	G1	G1	G1½
LIFTING SPEED AT FULL LOAD	m/min	17	11	5.5	43	2.5	1.6	1	1.6	1.1	0.65	0.45	0.35
LIFTING SPEED WITHOUT LOAD	m/min	19	11	5.5	63	5	3.2	2	1.4	2.3	1.6	1.3	0.7
LOWERING SPEED AT FULL LOAD	m/min	17	11	5.5	76	5.4	3.4	2.1	0.7	1.9	1.5	1.4	0.8
SMALLEST HEADROOM	mm	395	410	544	85	674	813	893	1090	1282	1466	1700	2200

Other lift heights are available

COMPLIES WITH AS1418.2

JDN AIR WINCHES also available

Profi-Lifter

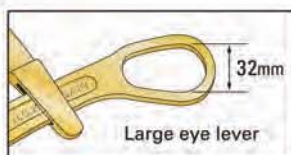
- 1000 - 1800kg capacity
- Durable steel structure



NGK WIRE GRIPS

**1 tonne L-Grip****Uses:**

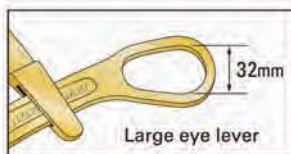
For bare copper cable, covered conductor and messenger wire.



Safe Working Load	Min. Cable Dia. mm	Max. Cable Dia. mm	Weight kg
10kN (1.0t)	4	22	1.1

2 tonne L-Grip**Uses:**

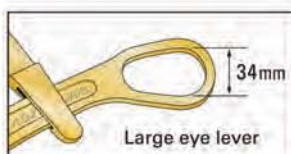
For bare copper cable, covered conductor and messenger wire.



Safe Working Load	Min. Cable Dia. mm	Max. Cable Dia. mm	Weight kg
20kN (2.0t)	4	22	1.3

3 tonne Grip**Uses:**

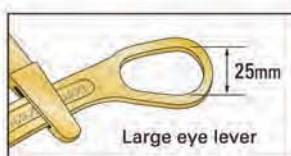
For wire rope, messenger wire, copper cable and trolley cable.



Safe Working Load	Min. Cable Dia. mm	Max. Cable Dia. mm	Weight kg
30kN (3.0t)	8	22	3.0

4 tonne Grip**Uses:**

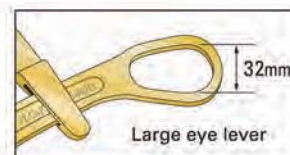
For wire rope, messenger wire, copper cable and trolley cable.



Safe Working Load	Min. Cable Dia. mm	Max. Cable Dia. mm	Weight kg
40kN (4.0t)	13	28	5.0

**AL - Middle Grip****Uses:**

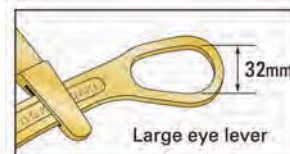
For bare aluminium cable and bare copper cable.



Safe Working Load	Min. Cable Dia. mm	Max. Cable Dia. mm	Weight kg
20kN (2.0t)	5	25	1.8

AL - Large Grip**Uses:**

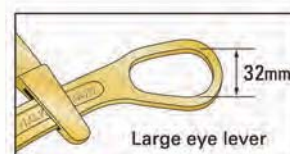
For bare aluminium cable and bare copper cable.



Safe Working Load	Min. Cable Dia. mm	Max. Cable Dia. mm	Weight kg
20kN (2.0t)	16	32	2.0

2 tonne W-Grip**Uses:**

For wire rope, messenger wire, copper cable and trolley cable.



Safe Working Load	Min. Cable Dia. mm	Max. Cable Dia. mm	Weight kg
20kN (2.0t)	5	16	1.4

NGK TENSION METERS

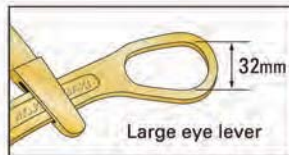
For precise measurement of tension and loads. Available in various sizes and capacities.



NGK WIRE GRIPS

**Middle L-Grip****Uses:**

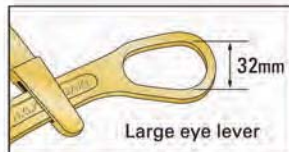
For bare copper cable, covered conductor and messenger wire.



Safe Working Load	Min. Cable Dia. mm	Max. Cable Dia. mm	Weight kg
20kN (2.0t)	5	25	1.8

Large L-Grip**Uses:**

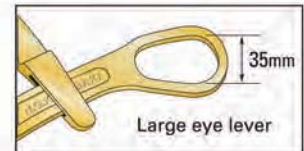
For copper cable and covered conductor



Safe Working Load	Min. Cable Dia. mm	Max. Cable Dia. mm	Weight kg
20kN (2.0t)	16	32	2.1

**ABC Grip****Uses:**

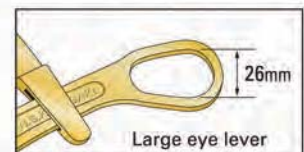
For aerial bundled cable.



Safe Working Load	Min. Cable Dia. mm	Max. Cable Dia. mm	Weight kg
8.5kN (0.85t)	4 x 35	4 x 95	3.0

**SD L-Grip****Uses:**

For steel rod, copper cable and messenger wire.



Safe Working Load	Min. Cable Dia. mm	Max. Cable Dia. mm	Weight kg
10kN (1.0t)	2.6	15	0.6

NGK RATCHET PULLERS

Models N-1000P & N-1500P (1.5m Pull)

Handle is insulated and rotates full 360°

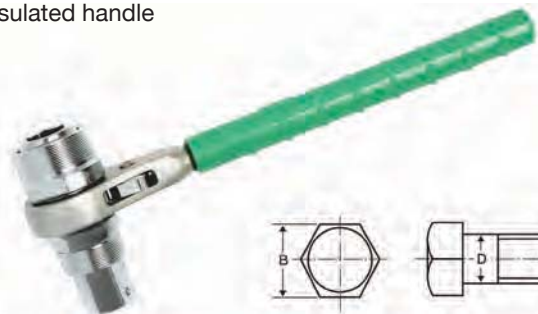


Model	Capacity kN - t	Strap Size mm	Min. Length mm	Max. Length mm	Lever Length mm	Wt. kg
N-1000P	10 (1.0)	2 x 33	440	1910	400	3.3
N-1500P	15 (1.5)	2 x 40	470	1940	475	4.6

NGK RATCHET WRENCH

Model BY-3**Four different sizes in one**

Insulated handle



Model	D mm	10	12	16	20	Wt. kg
BY3	B mm	17	19	24	30	0.9

TITAN PIPE TROLLEY



The Titan Pipe Trolley is designed for handling/hoisting equipment and moving heavy objects on a pipe beam that is lightweight and widely available.

Features:

- Compact construction, lightweight and easy to assemble
- Smooth operation with sealed ball-bearing wheels
- Complete with compliance and test certificate



Specifications

Model	TPT-03
Rated capacity	300kg
Pipe beam diameter	60mm
Suspension diameter	17mm
Headroom	103.5mm
Safety factor	4
Suitable shackle	Grade M 16mm pin size
Net weight	2.3kg
Overall size	106 x 156 x 160mm

PERMANENT MAGNETIC LIFTER

Capacity: 100kg to 6000kg

Our range of high strength magnetic lifters is produced with super strong Neodymium magnets, with your safety in mind. Operation is by way of turning the manual handle once on the operating surface.

In loading and unloading, the lifter can hoist iron/steel blocks, cylinders and others onto magnetic materials for linkage of connection. It is very convenient for application in loading, unloading and moving.

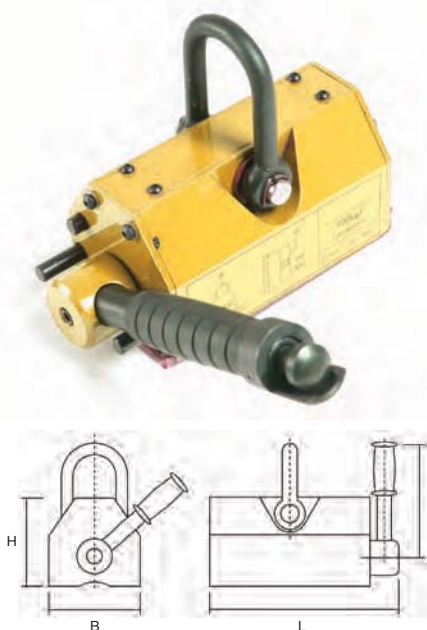
Our lifters are the most ideal lifting facility for factories, docks, warehouses and transportation and are light

and ingeniously structured, easy for application, strong magnetic attraction and safe in handling.

Features:

- The Magnetic Lifter's highest pulling force is 3.5 times greater than the rated lifting capacity
- Light weight, ranging from 10 - 50kg
- Safe: No electricity is needed to operate the Magnetic Lifter. Once operated there is less than 1% residual magnetism
- The simple switch and safety button design allows for one handed operation

COMPLIES WITH AS4991



Model No.	Rated lifting strength	Max Pull-off strength (kg)	L	B	H	R	Operation Temp (c)	Dead weight (kg)
AMF 100	100	350	62	92	67	126	80	3
AMF 300	300	1050	92	162	91	155	80	10
AMF 600	600	2100	122	232	117	196	80	24
AMF 1000	1000	3500	176	258	163	285	80	50
AMF2000	2000	7000	234	378	212	426	80	125
AMF3000	3000	10500	286	458	261	521	80	220
AMF6000	6000	21000	430	600	355	180	80	420

PORTABLE ALUMINIUM GANTRY CRANES



The Feltes Gantry Crane comes in three models:

- Folding Gantry Crane
- Static Gantry Crane
- Movable Gantry Crane

A product of excellent German design, each model provides an optimal balance between portability, ease of use and load bearing ability, providing the user with maximum flexibility in meeting their lifting requirements.

Each model can be disassembled for ease of transportation and quickly reassembled in just 5 minutes. The aluminium beams range from 2 to 5 metres (loads to 1,500kg) and 6 metres (up to 1,000kg).

FOLDING GANTRY CRANE



This model has collapsible lateral stands making the crane easy to move, transport and store. It comes in three sizes.

Mini

- Capacity: up to 1,500kg
- Total weight: 113kg
- Width of lateral stand: 1.19m
- Height for hanging hoist: 1.18–2.1m

Standard

- Capacity: up to 1,500kg
- Total weight: 121kg
- Width of lateral stand: 1.7m
- Height for hanging hoist: 1.68–3.00m

Maxi

- Capacity: up to 1,500kg
- Total weight: 145kg
- Width of lateral stand: 2.29m
- Height for hanging hoist: 2.23–4.00m

STATIC GANTRY CRANE



This model has non-collapsible side frames and comes in two sizes.

Mini

- Capacity: up to 1,500kg
- Total weight: 80kg
- Width of lateral stand: 1.12m
- Height for hanging hoist: 1.00–2.10m

Standard

- Capacity: up to 1,500kg
- Total weight: 100kg
- Width of lateral stand: 1.65m
- Height for hanging hoist: 1.80–3.00m

Optional wheel sets are also available for attachment to the static models if required.

MOVEABLE GANTRY CRANE



This model is moveable under load with a horizontal adjuster included.

Mini

- Capacity: up to 1,000kg
- Total weight: 120kg
- Width of lateral stand: 4.23m
- Height for hanging hoist: 1.5–2.0m

Standard

- Capacity: up to 1,000kg
- Total weight: 150kg
- Width of lateral stand: 4.23m
- Height for hanging the hoist: from 2.0–3.0m

Maxi

- Capacity: up to 1,000kg
- Total weight: 170kg
- Width of lateral stand: 4.23m
- Height for hanging hoist: from 2.25–3.5m



Manufactured Lifting Equipment

**IF YOU CAN'T FIND WHAT YOU'RE LOOKING
FOR, CALL OUR SALES TEAM & IF WE
DON'T HAVE IT, WE'LL GET IT FOR YOU!**